

095

4 GANG SWITCH PANEL SYSTEM WITH RGB BACKLIGHT



WHAT'S INCLUDED

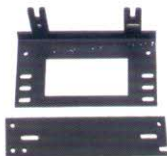
A Switch Panel



B Circuit Control Box



C Mounting Brackets



D Power Harness, Connections



E Circuit Breaker Protector



F 80pcs Labels(Decals)



PRODUCT FEATURES

- Control 4 auxiliary LED lights or electrical devices
- Colorful LED background lighting
- Lighting modes control-Toggle/Momentary/Pulsed.Press and hold for 3 seconds,the background light automatically switches colors.
- Automatic + Manual Backlight brightness adjustment
- ON/OFF switch or momentary press operation
- 80 Labels / stickers / decals design + DIY
- DC 12V~24V
- 600W~1200W output power
- 60A resettable

SWITCH PANEL INDICATION

① LED lights up to show the circuit is on

② RGB LED illumination area, back light

③ Integrated sensor circuit
Backlit brightness dimmable

④ Power on/off button, with memory function, press the on / off button once to automatically remember the last use.

⑤ Area for DIY placement of the selected labels



Press and hold the on / off button for 3 seconds to switch 7 colors of backlight

BACKLIT BRIGHTNESS DIMMABLE

The backlit brightness of the switch panel is automatically dimmable according to the brightness variation of the surroundings/ environment.

At Night



In the tunnel or other dark places, the switch panel will be dim, reduce the impact on the driver's vision

Daytime



On the road or other bright places, the switch panel will be brighter, make you control it more easier

80PCS REUSABLE SWITCH LABELS



① Thoroughly clean the switch panel.

② Peel off the lable and firmly press down on the switch panel.



③ Multi-function labels for DIY your specific needs. (80 icons).



↑
DIY Labels



← DIY Labels

CONTROL PANEL WORKING MODE

LIGHTING MODE SETTING

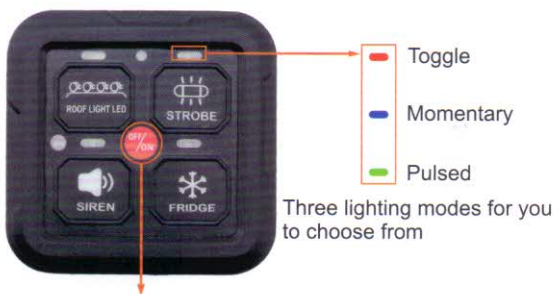
3 lighting modes for you to choose and different colors represent different working modes:

Red: Toggle

Blue: Momentary

Green: Pulsed

★Blue: Momentary, Press & hold to turn on the light and release to turn off the lights.



OFF/ON Press 2 times continuously to enter the setting mode (the indicator blinks continuously for 26 times).

Press the function key to convert the function on the key

LIGHTING MODE SETTING

The red indicator light is on when the switch panel is on. When you select the mode, the indicator will show the color of the corresponding function.



Toggle



Momentary



Pulsed



MOUNTING THE CONTROL BOX

TWO different installation methods are available:

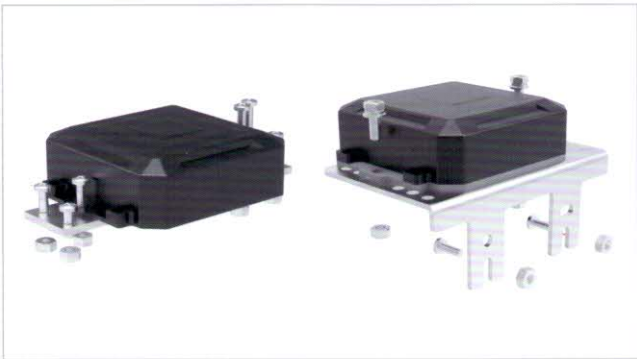
- Fix mount bracket
- Flush mount

The ideal mounting of the control box should allow for an unobstructed path for the power wires, accessory wires and the control harnesses included.

If you decide to drill, please check the clearance behind the drilling location. Make sure you are not going to drill through and damage any wiring harness and components of the vehicle.

OPTION 1 : Fix Mount

Using the mounting bracket as a guide, find a good and desired location to mount the control box.



OPTION 2 : Flush Mount

Using the control box as a guide, find a good and desired location to mount.



SWITCH PANEL INSTALLATION

SWITCH PANEL MOUNTING

- ▶ Attach the switch panel to the mount bracket you need, then use the supplied screw accessories to fix the bracket.
- ▶ The ideal thickness of the mounting surface should be between 1/8" to 1/4".
- ▶ Check to make sure the control wire and extension plug&play wire is long enough to mount the desired location.
- ▶ Check the clearance behind the installation location. Make sure you are not going to drill through and damage any wires and components of the vehicle.
- ▶ Once you decide where to mount, use the bracket to mark the drill location.
- ▶ After the installation of the panel, proceed to the wiring installation.

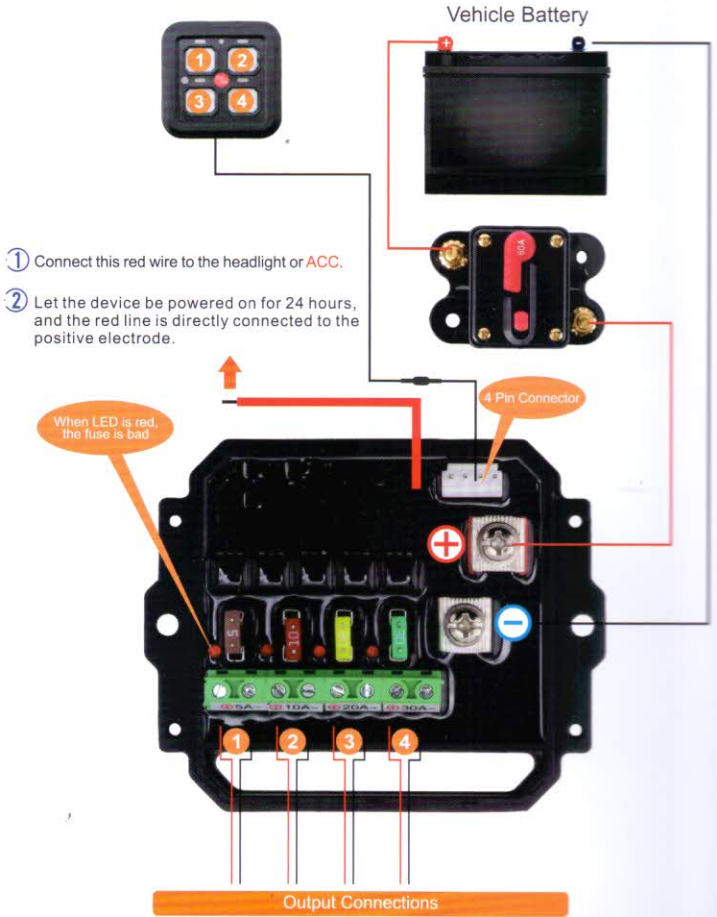
OPTION 1 : Angle Adjustable Mount



OPTION 2 : Flush Mount



SWITCH ASSEMBLY WIRING DIAGRAM



Connect to 4 auxiliary LED lights or electrical devices

Total power will go to 600w at 12V, 1200W at 24V and the maximum current is 60A.

The maximum output current of ground 4 is 30A, the maximum output current of ground 1-3 is 20A.

The recommended connection method is to increase the current gradually from ground 1 to 4 ground.

Make sure all the lamps are connectly before connecting the power cable.

Circuit 1	Circuit 2
5A	10A
Circuit 3	Circuit 4
20A	30A

